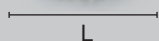


ACCESSORI IN TESSUTO

F = Ferro **A** = Alluminio **O** = Ottone **Z** = Zama

F = Iron **A** = Aluminium **O** = Brass **Z** = Zamak alloy



dimensioni (mm)

H L

3V **O** 198 ————— 20.00 bombato



3V **O** 199 ————— 25.00 bombato



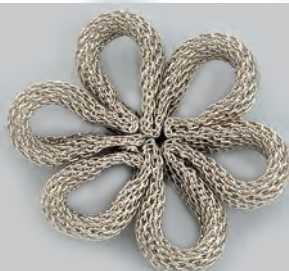
3V **O** 200 ————— 28.00 bombato



3V **O** 192 ————— 35.00 piatto



3V **O** 263 ————— 45.00 piatto

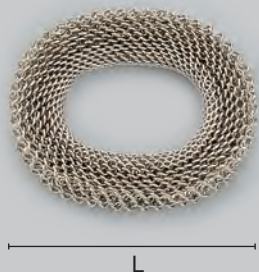


3V **O** 203

ACCESSORI IN TESSUTO

F = Ferro A = Alluminio O = Ottone Z = Zama

F = Iron A = Aluminium O = Brass Z = Zamak alloy



dimensioni (mm)	
H	L

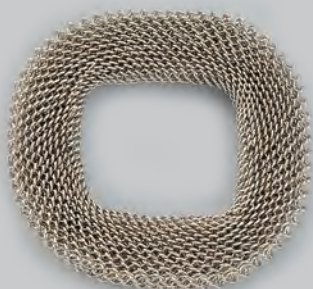
3V **O** 187 33.00 piatto



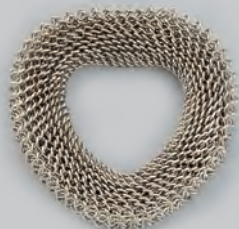
3V **O** 186 45.00 piatto



3V **O** 189 26.00 piatto



3V **O** 188 40.00 piatto



3V **O** 191 30.00 piatto



3V **O** 190 42.00 piatto

ACCESSORI IN TESSUTO

F = Ferro A = Alluminio O = Ottone Z = Zama

F = Iron A = Aluminium O = Brass Z = Zamak alloy



dimensioni (mm)

H L

3V O 225 17.0



3V O 212 34.0



3V O 213 35.00



3V O 201



3V O 202

ACCESSORI IN TESSUTO

F = Ferro A = Alluminio O = Ottone Z = Zama

F = Iron A = Aluminium O = Brass Z = Zamak alloy

dimensioni (mm)

H	L
---	---



3V O 206 ————— 20.00

3V O 207 ————— 25.00



3V O 208 ————— 20.00

3V O 223 ————— 25.00

3V O 224 ————— 30.00



3V F 233 ————— 23.00



3V F 234 ————— 23.00

ACCESSORI IN TESSUTO

F = Ferro A = Alluminio O = Ottone Z = Zama
 F = Iron A = Aluminium O = Brass Z = Zamak alloy

dimensioni (mm)

H L



3V O 235



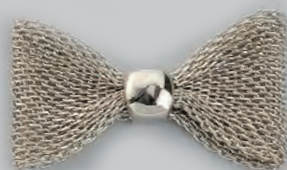
3V O 236



3V O 237



3V O 193



3V O 194



3V O 195

ACCESSORI IN TESSUTO

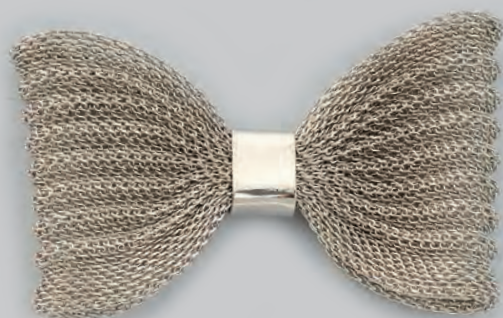
F = Ferro A = Alluminio O = Ottone Z = Zama
F = Iron A = Aluminium O = Brass Z = Zamak alloy

dimensioni (mm)

H L



3V O 196



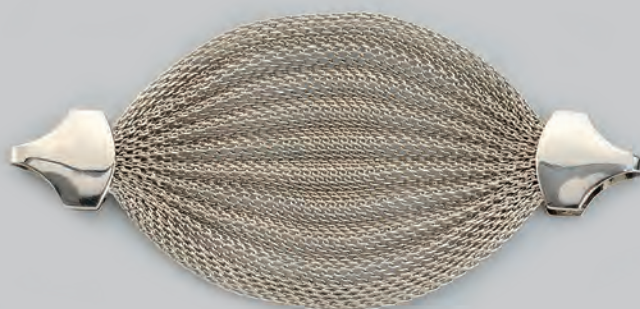
3V O 197



3V O 251



3V O 252



3V O 253

ACCESSORI

F = Ferro **A** = Alluminio **O** = Ottone **Z** = Zama
F = Iron **A** = Aluminium **O** = Brass **Z** = Zamak alloy



dimensioni (mm)

H	L
---	---

3V **F** 2093V **F** 2103V **F** 2113V **F** 2263V **F** 2273V **F** 278

14.00

3V **F** 279

16.00

3V **F** 280

20.00

3V **F** 281

25.00

3V **F** 282

30.00

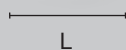
ACCESSORI

F = Ferro A = Alluminio O = Ottone Z = Zama

F = Iron A = Aluminium O = Brass Z = Zamak alloy

dimensioni (mm)

H L



3V **O** 266 15.00



3V **O** 267 20.00



3V **O** 268 25.00



3V **O** 269 30.00



3V **O** 270 15.00



3V **O** 271 20.00

ACCESSORI

F = Ferro **A** = Alluminio **O** = Ottone **Z** = Zama
F = Iron **A** = Aluminium **O** = Brass **Z** = Zamak alloy



dimensioni (mm)

H L

3V **O** 272 25.003V **O** 273 30.003V **O** 274 15.003V **O** 275 20.003V **O** 276 25.003V **O** 277 30.00