

FANTASIA

F = Ferro **A** = Alluminio **O** = Ottone ***** = Saldata
F = Iron **A** = Aluminium **O** = Brass ***** = Welded

O 344 *



Battuta
ø filo 6.00 mm

O 345 *



ø filo 0.60 mm

O 456



Pinzetta
ø filo 0.50 mm

O 143



Pinzetta
ø filo 0.60 mm

O 245



Pinzetta
ø filo 0.80 mm

O 65



Agganciata
ø filo 1.00 mm

O 881



Agganciata

F 44
O 175



Gomitolo
ø filo 0.60 mm

O 406



O 821



O 822



FANTASIA

F = Ferro **A** = Alluminio **O** = Ottone ***** = Saldata

F = Iron **A** = Aluminium **O** = Brass ***** = Welded

O 186



Stampata ovale
ø filo 1.20 mm

O 587



O 588



O 590



O 591



F 33
O 35



Intrecciata
ø filo 1.20 mm

O 31



Otto
ø filo 1.20 mm

O 30



otto D2L
ø filo 1.20 mm

O 879



"8"
mm 2.00

FANTASIA

F = Ferro **A** = Alluminio **O** = Ottone ***** = Saldata
F = Iron **A** = Aluminium **O** = Brass ***** = Welded

O 657 *****



O 658 *****



O 659 *****



O 392



O 393



O 660 *****



O 661 *****



O 394



O 395



FANTASIA

F = Ferro A = Alluminio O = Ottone * = Saldata
F = Iron A = Aluminium O = Brass * = Welded

O 396



O 397



O 398



O 400



O 305



O 371



O 128



O 299



FANTASIA

F = Ferro **A** = Alluminio **O** = Ottone ***** = Saldata

F = Iron **A** = Aluminium **O** = Brass ***** = Welded

O 470



O 471



O 472



O 651



O 562



O 563



O 564



O 674



FANTASIA

F = Ferro **A** = Alluminio **O** = Ottone ***** = Saldata
F = Iron **A** = Aluminium **O** = Brass ***** = Welded

O 388



O 389



O 390



O 391



O 64



O 421



O 469



F 235



F 234



FANTASIA

F = Ferro **A** = Alluminio **O** = Ottone ***** = Saldata
F = Iron **A** = Aluminium **O** = Brass ***** = Welded

F 118



F 119



F 275



O 812



F 265



O 773



O 725



O 726



FANTASIA

F = Ferro A = Alluminio O = Ottone * = Saldata
F = Iron A = Aluminium O = Brass * = Welded

O 512



O 513



O 583



O 713



O 547



O 548



O 549



O 801



FANTASIA

F = Ferro **A** = Alluminio **O** = Ottone ***** = Saldata

F = Iron **A** = Aluminium **O** = Brass ***** = Welded

F 120



F 121



F 122



F 123



F 124



F 125



O 127



FANTASIA

F = Ferro A = Alluminio O = Ottone * = Saldata
F = Iron A = Aluminium O = Brass * = Welded

O 927 *



O 702 *



O 703 *



O 704 *



O 705 *



O 928 *



O 706 *



O 707 *



FANTASIA

F = Ferro A = Alluminio O = Ottone * = Saldata

F = Iron A = Aluminium O = Brass * = Welded

O 407 *



O 458 *



O 459 *



O 460 *



O 461 *



FANTASIA

F = Ferro A = Alluminio O = Ottone * = Saldata
F = Iron A = Aluminium O = Brass * = Welded

O 474 *



O 473 *



O 475 *



O 489 *



O 488 *



O 942



F 273



O 483



FANTASIA

F = Ferro **A** = Alluminio **O** = Ottone ***** = Saldata

F = Iron **A** = Aluminium **O** = Brass ***** = Welded

F CA38 *****



F CA39 *****



F CA5 *****



F CA20 *****



F CA16 *****



F CA19 *****



F CA4 *****



FANTASIA

F = Ferro A = Alluminio O = Ottone * = Saldata

F = Iron A = Aluminium O = Brass * = Welded

F 178 *



F 179 *



F CA24 *



F CA21 *



F CA27 *



F CA9 *



F CA23 *



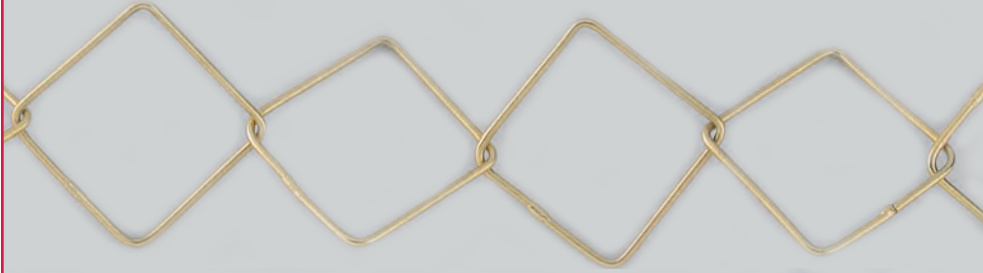
FANTASIA

F = Ferro **A** = Alluminio **O** = Ottone ***** = Saldata
F = Iron **A** = Aluminium **O** = Brass ***** = Welded

F CA32 *****



F CA36 *****



F 182 *****



O 675



F CA43 *****



F CA30 *****



F CA13 *****



FANTASIA

F = Ferro A = Alluminio O = Ottone * = Saldata
F = Iron A = Aluminium O = Brass * = Welded

F CA40 *



F CA42 *



F CA41 *



F CA1 *



F 184 *



FANTASIA

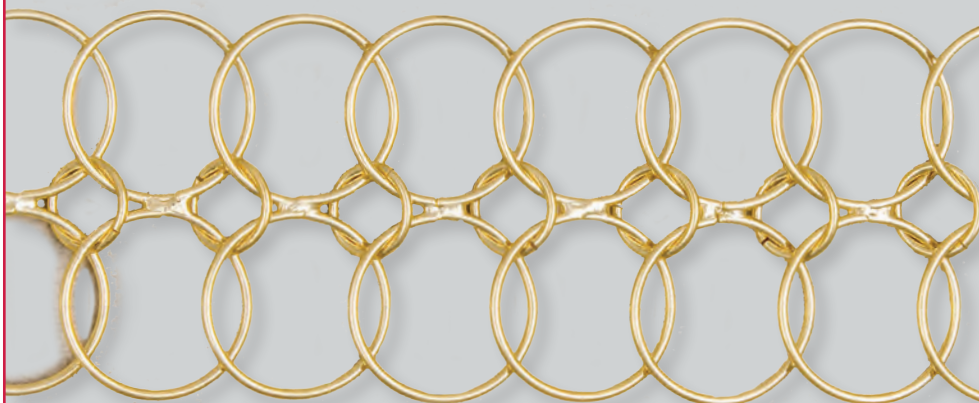
F = Ferro **A** = Alluminio **O** = Ottone ***** = Saldata

F = Iron **A** = Aluminium **O** = Brass ***** = Welded

F CA45 *****



F 248 *****



F 243



F 244



O 566



FANTASIA

F = Ferro A = Alluminio O = Ottone * = Saldata

F = Iron A = Aluminium O = Brass * = Welded

A 98



Anello
ø int. 12.00 mm

A 44



Anello
ø int. 19.00 mm

A 45



Anello
ø int. 20.00 mm

A 47



Anello
ø int. 30.00 mm

O 669 *



A 102



Anello
ø int. 12.00 mm

A 246



Anello
ø int. 14.00 mm

FANTASIA

F = Ferro A = Alluminio O = Ottone * = Saldata

F = Iron A = Aluminium O = Brass * = Welded

A 46



Anello
ø int. 20.00 mm

A 62



Anello
ø int. 20.00 mm

A 48



Anello
ø int. 30.00 mm

A 52



Anello
ø int. 19.00 mm

A 49



3 anelli
ø int. 12.00 mm

A 50



3 anelli
ø int. 17.00 mm

FANTASIA

F = Ferro A = Alluminio O = Ottone * = Saldata

F = Iron A = Aluminium O = Brass * = Welded

A 96



Ovali filo quadro
2.00 mm

A 95



Ovali filo quadro
2.00 mm

A 92



Ovali filo quadro
3.00 mm

A 97



Ovali filo quadro
3.00 mm

A 51



3 anelli ovali

A 121



2 anelli ovali
1 liscio
1 rigato

FANTASIA

F = Ferro **A** = Alluminio **O** = Ottone ***** = Saldata
F = Iron **A** = Aluminium **O** = Brass ***** = Welded

A 248



A 185



A 244



A 245



A 247



O 479



A 136



FANTASIA

F = Ferro A = Alluminio O = Ottone * = Saldata
F = Iron A = Aluminium O = Brass * = Welded

O 485



O 486



O 487



A 53



O 663



O 664



O 662



O 665



F 225

O 644



FANTASIA



F = Ferro A = Alluminio O = Ottone * = Saldata

F = Iron A = Aluminium O = Brass * = Welded

O 666



O 667



O 541 *



O 565 *



O 546 *



FANTASIA

F = Ferro A = Alluminio O = Ottone * = Saldata

F = Iron A = Aluminium O = Brass * = Welded

O 405



mm 5.00

O 404



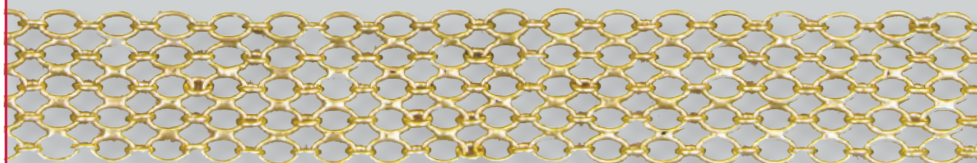
mm 6.00

O 403



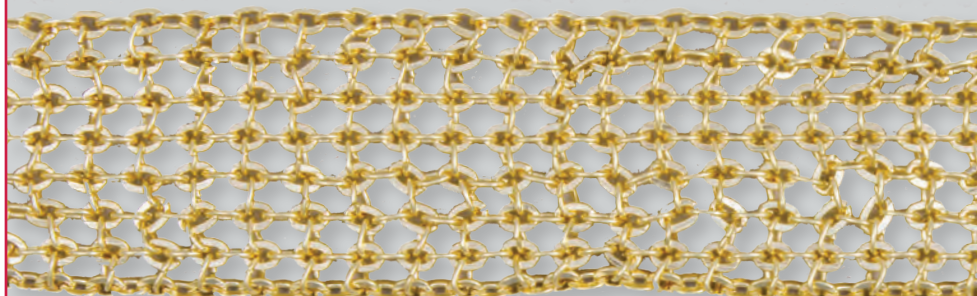
mm 11.50

O 752 *



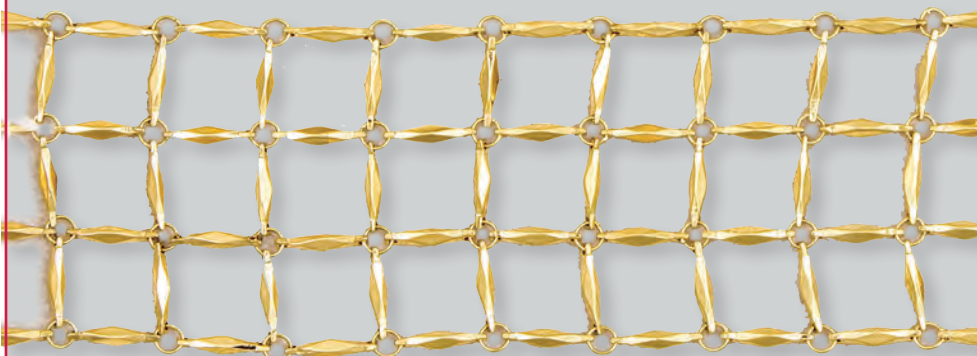
Ovali
5 file

F 261



Forzatina
battuta
8 file

O 782 *



O 796 *



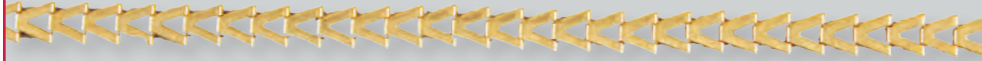
Barrette +
bastoncini

FANTASIA



F = Ferro **A** = Alluminio **O** = Ottone ***** = Saldata
F = Iron **A** = Aluminium **O** = Brass ***** = Welded

O 935

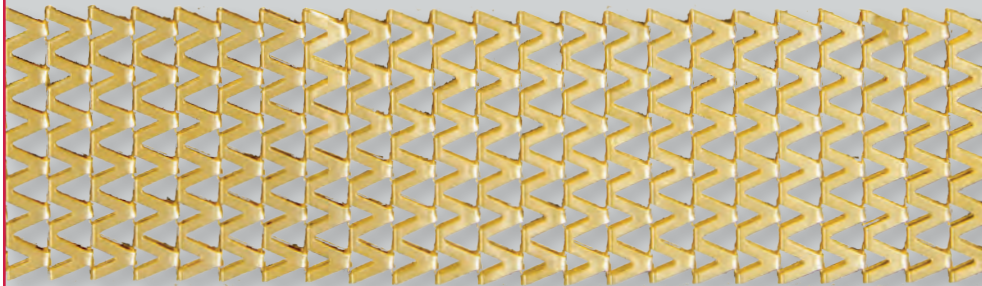


O 708



mm 12.00

F 257



mm 36.00

F 233



mm 19.00

F 242



mm 15.00

O 385



mm 12.00

O 386



mm 15.00

FANTASIA



F = Ferro A = Alluminio O = Ottone * = Saldata
F = Iron A = Aluminium O = Brass * = Welded

A 57



O 130



F 217



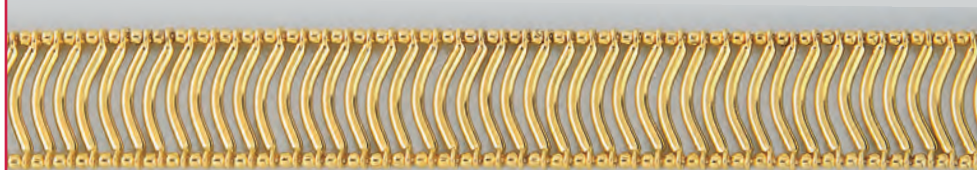
F 218



O 668 *



O 677



mm 20.00

FANTASIA



F = Ferro **A** = Alluminio **O** = Ottone ***** = Saldata

F = Iron **A** = Aluminium **O** = Brass ***** = Welded

O 508



mm 9.00

O 509



mm 14.00

O 510



mm 15.00

F 240



mm 25.00

F 241



mm 25.00

F 245



mm 14.50

F 214



F 249



FANTASIA

F = Ferro A = Alluminio O = Ottone * = Saldata

F = Iron A = Aluminium O = Brass * = Welded

F 169



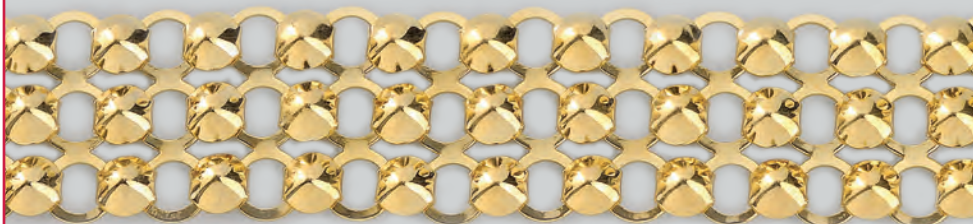
Piramide
3 file

F 223



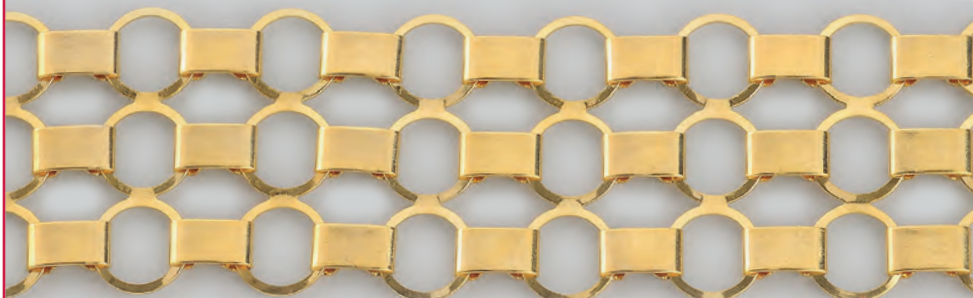
Piramide
5 file

F 219



Catena 3 file
cerchio + cono

F 220



Catena 3 file
cerchio + fascetta

F 221



Catena 3 file
cerchio + fascetta
rigata

F 222



Catena 3 file
cerchio + fascetta
rigata