

NODI

F = Ferro A = Alluminio O = Ottone Z = Zama
F = Iron A = Aluminium O = Brass Z = Zamak alloy



dimensioni (mm)

H

L

X012

in ferro



X001

in ferro



X010

in ferro



X014

in ferro



X018

in ferro



X026

in ferro

NODI

F = Ferro **A** = Alluminio **O** = Ottone **Z** = Zama
F = Iron **A** = Aluminium **O** = Brass **Z** = Zamak alloy



dimensioni (mm)

H L

X003

in ferro



X004

in ferro



X015

in ferro



X016

in ferro



X013

in ferro



X017

in ferro

NODI

- F = Ferro A = Alluminio O = Ottone Z = Zama
F = Iron A = Aluminium O = Brass Z = Zamak alloy



dimensioni (mm)

H L

X006

in ferro



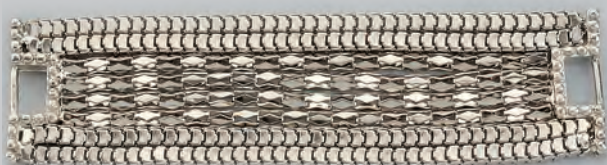
X021

in ferro



X020

in ferro



X030

in ferro



X027

in ferro

NODI

F = Ferro **A** = Alluminio **O** = Ottone **Z** = Zama
F = Iron **A** = Aluminium **O** = Brass **Z** = Zamak alloy



dimensioni (mm)

H	L

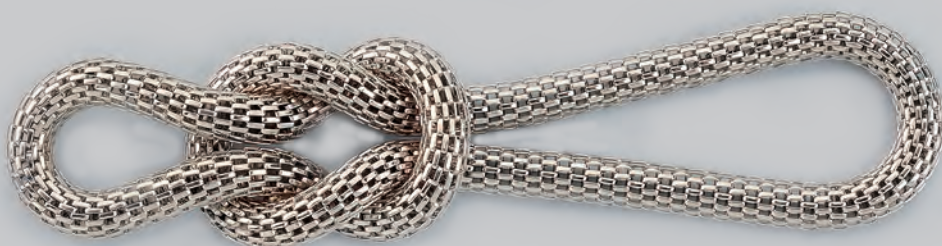
X007

in ferro



X008

in ferro



X028

in ferro



X029

in ferro



X019

in ferro

NODI

- F = Ferro A = Alluminio O = Ottone Z = Zama
F = Iron A = Aluminium O = Brass Z = Zamak alloy

dimensioni (mm)	
H	L



X025 in ferro



X031 in ferro



X032 in ferro

BRACCIALI

F = Ferro **A** = Alluminio **O** = Ottone **Z** = Zama

F = Iron **A** = Aluminium **O** = Brass **Z** = Zamak alloy

dimensioni (mm)

H L



X022

in ferro



X023

in ferro

BRACCIALI

- F = Ferro A = Alluminio O = Ottone Z = Zama
F = Iron A = Aluminium O = Brass Z = Zamak alloy

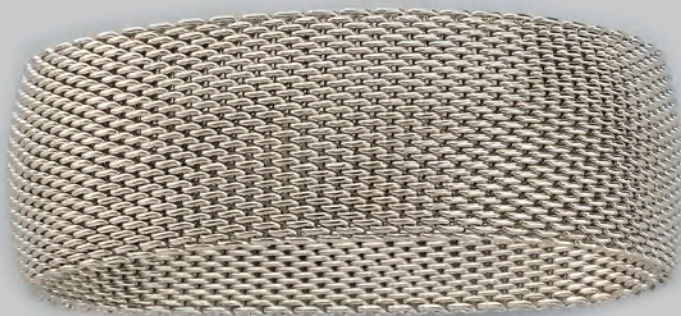
dimensioni (mm)

H L



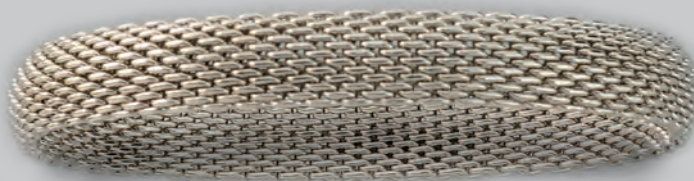
X024

in ferro



3V O 204

in ottone



3V O 205

in ottone