

PERLE

F = Ferro **A** = Alluminio **O** = Ottone ***** = Saldata

F = Iron **A** = Aluminium **O** = Brass ***** = Welded

O 101



piatta bianca
ø perle 4.00 mm

O 102



piatta bianca
ø perle 5.00 mm

O 103



piatta bianca
ø perle 8.00 mm

O 298



piatta bicolore
ø perle 8.00 mm

O 104



bicolore
ø perle 8.00 mm

O 106



bianca
ø perle 8.00 mm

O 107



bianca
ø perle 10.00 mm

PERLE

F = Ferro **A** = Alluminio **O** = Ottone ***** = Saldata
F = Iron **A** = Aluminium **O** = Brass ***** = Welded

O 422



ø perle
5.00 mm

O 807



ø perle
2.00 mm

O 423



forzatina +
perla ø 4.00 mm

O 424



forzatina +
perla ø 8.00 mm

O 411



corda + 2 perle
ø 6.00 mm

O 412



ø perla
6.00 mm

O 413



ø perla
8.00 mm

O 414



groumetta +
perla ø 5.00 mm

PERLE

F = Ferro **A** = Alluminio **O** = Ottone ***** = Saldata

F = Iron **A** = Aluminium **O** = Brass ***** = Welded

O 890



perle
ø 6.00 mm

O 891



perle
ø 8.00 mm

O 892



perle
ø 10.00 mm

O 425



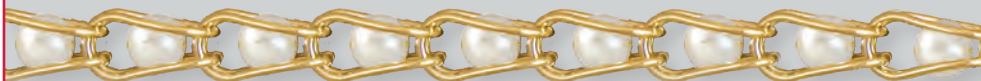
sfera + perle
ø 8.00 mm

O 426



bizantina +
perle
ø 8.00 mm

O 884 *



perle
ø 8.00 mm

O 885 *



perle
ø 10.00 mm

O 428



perle
ø 6.00 mm

O 429



perle
ø 8.00 mm

O 430



perle
ø 10.00 mm

PERLE

F = Ferro **A** = Alluminio **O** = Ottone ***** = Saldata

F = Iron **A** = Aluminium **O** = Brass ***** = Welded

O 775



Rosario
mm 4.00
perla nera

O 776



Rosario
mm 6.00
perla nera

O 777



Rosario
mm 8.00
perla nera

O 778



Rosario
mm 4.00
perla trasparente

O 779



Rosario
mm 6.00
perla trasparente

O 780



Rosario
mm 8.00
perla trasparente

O 882



Perla nera
mm 4.00
+ forzatina

O 883



Perla nera
mm 4.00
+ forzatina 1 cm

O 781 *



Tondini
+ perline
bianche

O 804



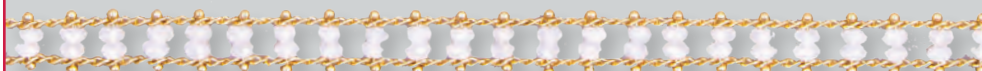
Sfere ottone
mm 4.00 +
sfere vetro

O 805



Forzatina
+ sfere vetro
colorate

O 806



Sfere vetro
+ 2 file catena