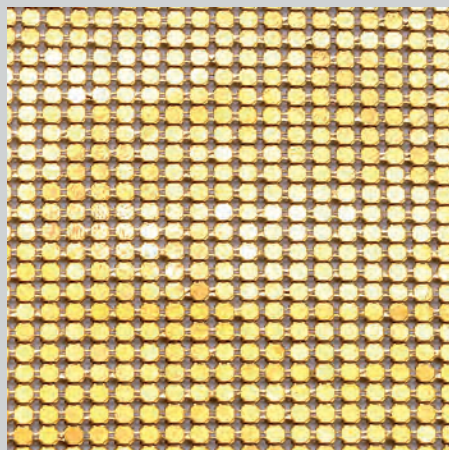
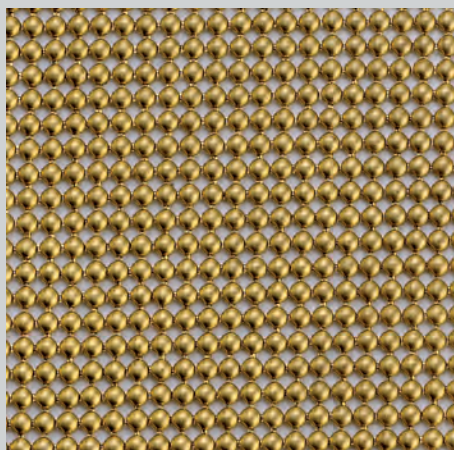


# PEZZE TESSUTO

**F** = Ferro    **A** = Alluminio    **O** = Ottone    **\*** = Saldata  
**F** = Iron    **A** = Aluminium    **O** = Brass    **\*** = Welded

**A** 104  
**O** 373

Palline  
 mm 3.00  
**A104:**  
 cm 150x43  
**O373:**  
 cm 100x45

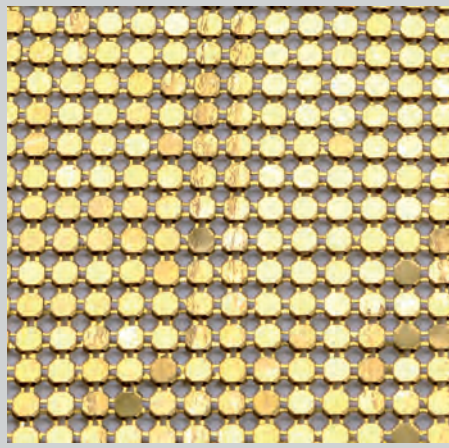
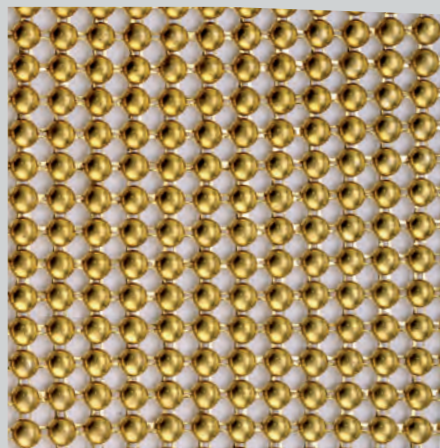


**A** 105  
**O** 374

Palline piatte  
 mm 3.00  
**A105:**  
 cm 150x43  
**O374:**  
 cm 100x45

**A** 106  
**O** 375

Palline  
 mm 4.00  
**A106:**  
 cm 150x43  
**O375:**  
 cm 100x45

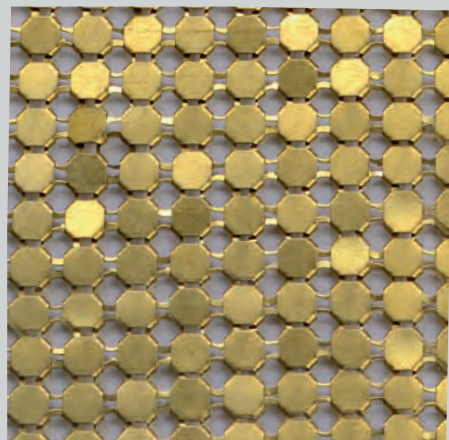
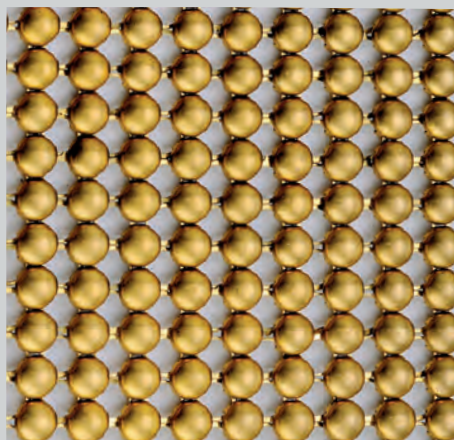


**A** 288  
**O** 455

Palline piatte  
 mm 4.00  
**A288:**  
 cm 150x43  
**O455:**  
 cm 100x45

**A** 173  
**O** 376

Palline  
 mm 6.00  
**A173:**  
 cm 150x43  
**O376:**  
 cm 100x45



**A** 107  
**O** 477

Palline piatte  
 mm 6.00  
**A107:**  
 cm 150x43  
**O477:**  
 cm 100x45

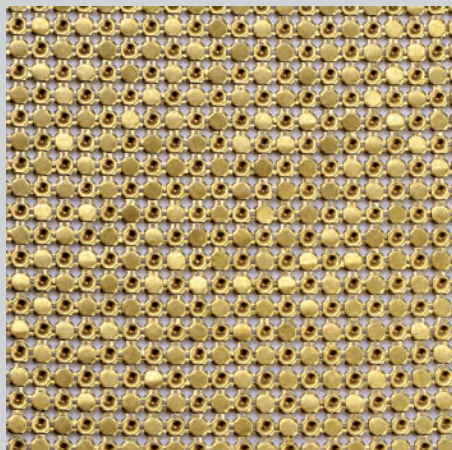
## PEZZE TESSUTO

**F** = Ferro   **A** = Alluminio   **O** = Ottone   **\*** = Saldata

**F** = Iron   **A** = Aluminium   **O** = Brass   **\*** = Welded

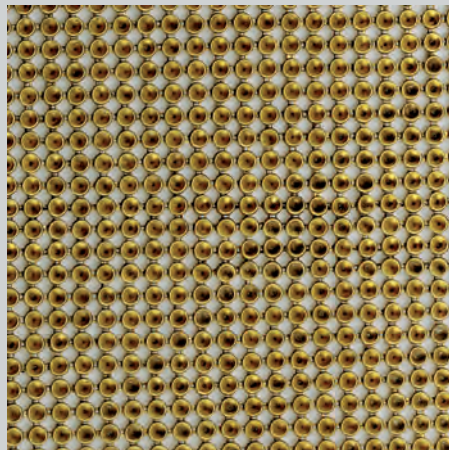
**O** 540

Palline piatte  
+ portastrass  
mm 3.00  
**O540:**  
cm 100x45



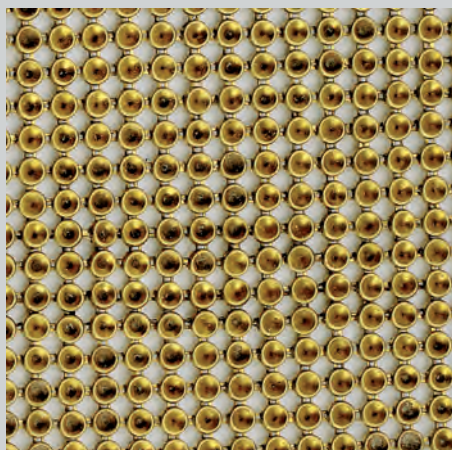
**O** 567

Palline  
portastrass  
mm 3.00  
**O567:**  
cm 100x45



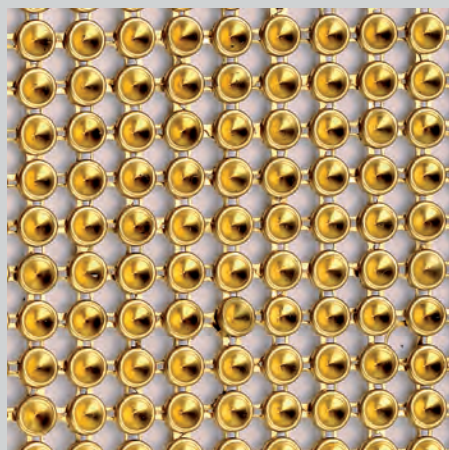
**O** 568

Palline  
portastrass  
mm 4.00  
**O568:**  
cm 100x45



**O** 569

Palline  
portastrass  
mm 6.00  
**O569:**  
cm 100x45



**A** 191

Piramide  
mm 4.00  
**A191:**  
cm 150x43

