

TESSUTO MILANESE

F = Ferro **A** = Alluminio **O** = Ottone ***** = Saldata
F = Iron **A** = Aluminium **O** = Brass ***** = Welded

O 439



Piatto
4.00 x 1.30 mm

O 288



Piatto
4.00 x 2.00 mm

O 440



Piatto
6.00 x 1.30 mm

O 289



Piatto
6.00 x 2.00 mm

O 441



Piatto
8.00 x 1.30 mm

O 290



Piatto
8.00 x 2.00 mm

O 442

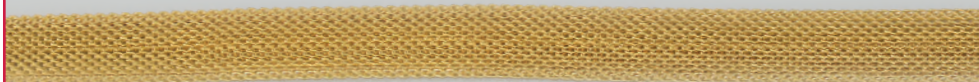


Piatto
10.00 x 1.30 mm

TESSUTO MILANESE

F = Ferro A = Alluminio O = Ottone * = Saldata
F = Iron A = Aluminium O = Brass * = Welded

O 291



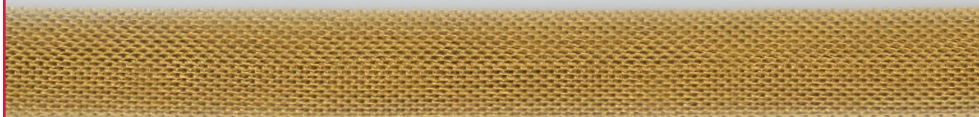
Piatto
10.00 x 2.00 mm

O 292



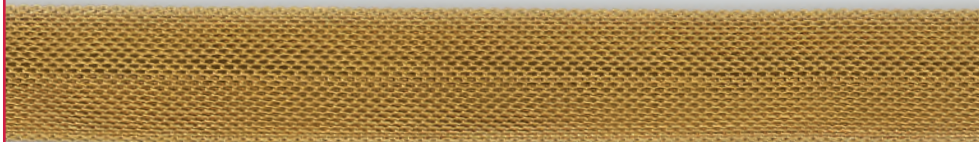
Piatto
12.00 x 2.00 mm

O 293



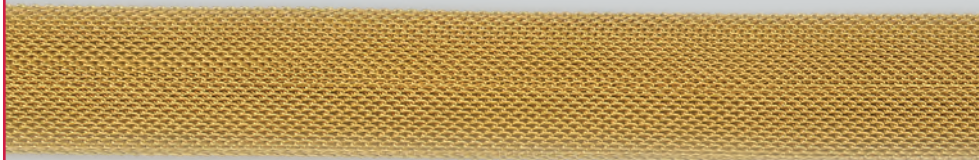
Piatto
15.00 x 2.00 mm

O 294



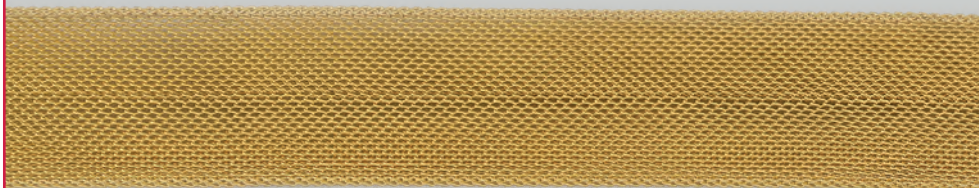
Piatto
18.00 x 2.00 mm

O 295



Piatto
20.00 x 2.00 mm

O 296



Piatto
24.00 x 2.00 mm

TESSUTO MILANESE

F = Ferro A = Alluminio O = Ottone * = Saldata
F = Iron A = Aluminium O = Brass * = Welded

F 162
O 570



Piatto
4.00 x 1.50 mm

F 163
O 571



Piatto
6.00 x 1.50 mm

F 164
O 572



Piatto
8.00 x 1.50 mm

F 70
O 573



Piatto
10.00 x 1.50 mm

F 69
O 574



Piatto
15.00 x 1.50 mm

F 68
O 575



Piatto
18.00 x 1.50 mm

F 67
O 576

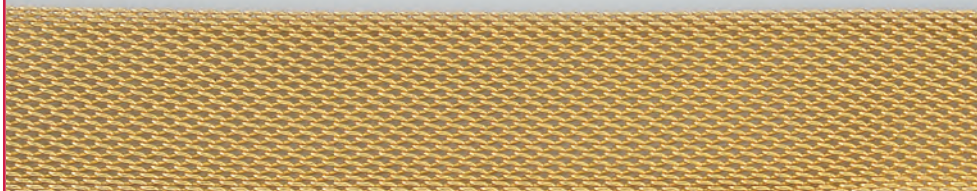


Piatto
20.00 x 1.50 mm

TESSUTO MILANESE

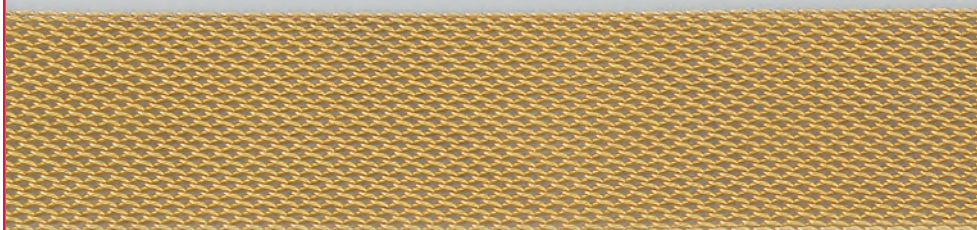
F = Ferro A = Alluminio O = Ottone * = Saldata
F = Iron A = Aluminium O = Brass * = Welded

F 66
O 577



Piatto
 25.00 x 1.50 mm

F 151
O 578



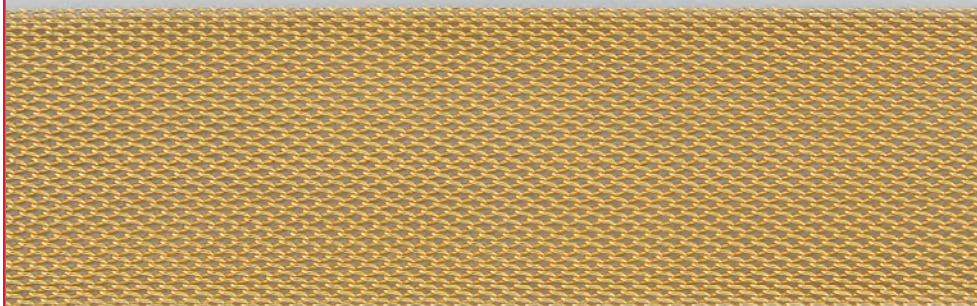
Piatto
 30.00 x 1.50 mm

F 156
O 579



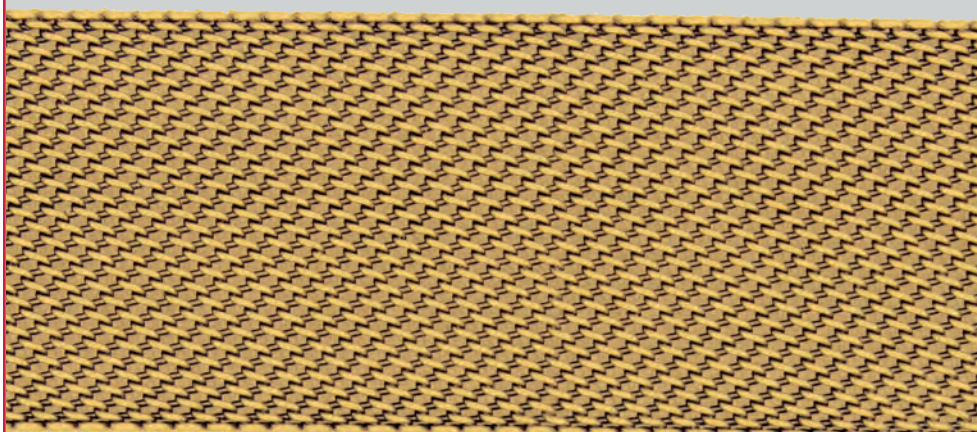
Piatto
 35.00 x 1.50 mm

F 154
O 580



Piatto
 40.00 x 1.50 mm

O 755



Piatto
 55.00
 filo 1.00 mm

TESSUTO MILANESE

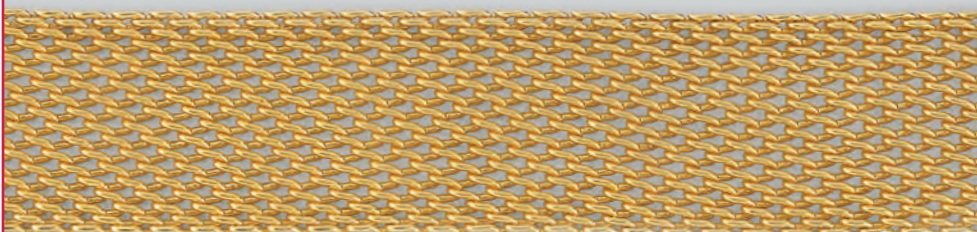
F = Ferro A = Alluminio O = Ottone * = Saldata
F = Iron A = Aluminium O = Brass * = Welded

O 621



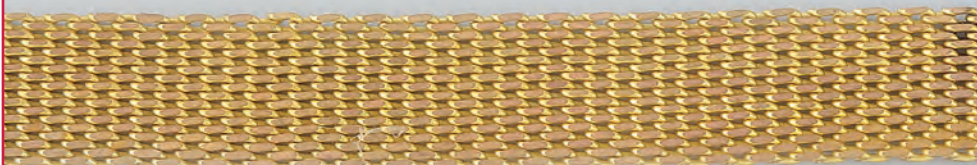
concavo mm 15

O 523



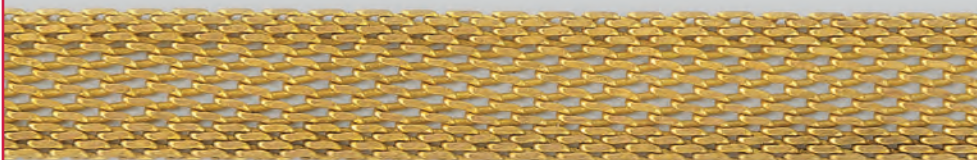
Piatto
30 mm

O 617



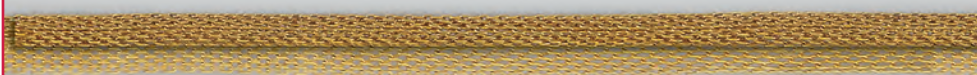
Piatto
diamantato 2 lati
20 mm

O 618



Piatto
diamantato 2 lati
20 mm

O 616



con 1 bordo
8.00 mm

O 619



6.00 mm

TESSUTO MILANESE

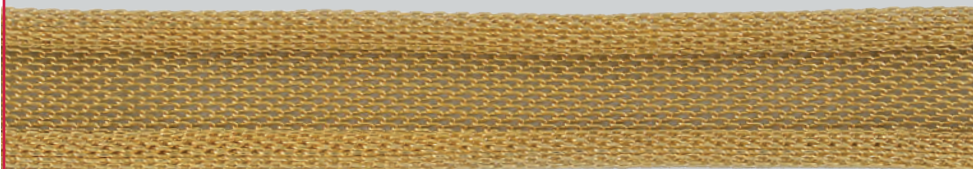
F = Ferro A = Alluminio O = Ottone * = Saldata
F = Iron A = Aluminium O = Brass * = Welded

O 838		Tubolare 4.00 mm
O 839		Tubolare 5.00 mm
O 840		Tubolare 6.00 mm
O 187		Tondo 3.00x0.30 mm
O 188		Tondo 4.00x0.30 mm
O 189		Tondo 5.00x0.30 mm
O 190		Tondo 6.00x0.30 mm
O 191		Tondo 6.00x0.40 mm
O 192		Tondo 8.00x0.40 mm
O 493		Tondo 12x0,80 mm
O 929		ritorto 6 mm
O 714		ritorto 8 mm
O 511		ritorto 10 mm

TESSUTO MILANESE

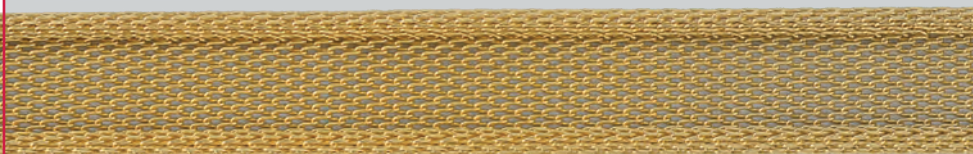
F = Ferro **A** = Alluminio **O** = Ottone * = Saldata
F = Iron **A** = Aluminium **O** = Brass * = Welded

O 377



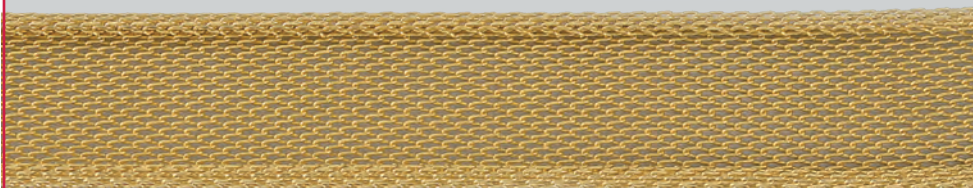
c/bordi
mm 20 filo 0.45

F 127



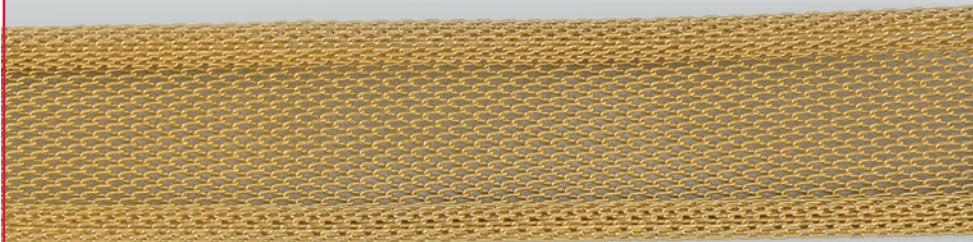
c/bordi
mm 20 filo 0.45

F 128
O 378



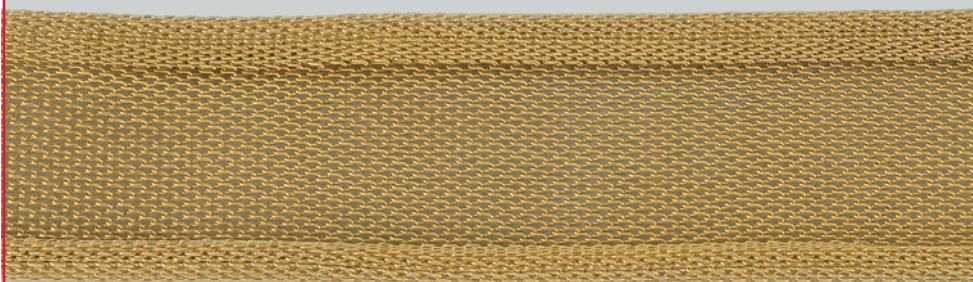
c/bordi
mm 25 filo 0.45

F 129
O 379



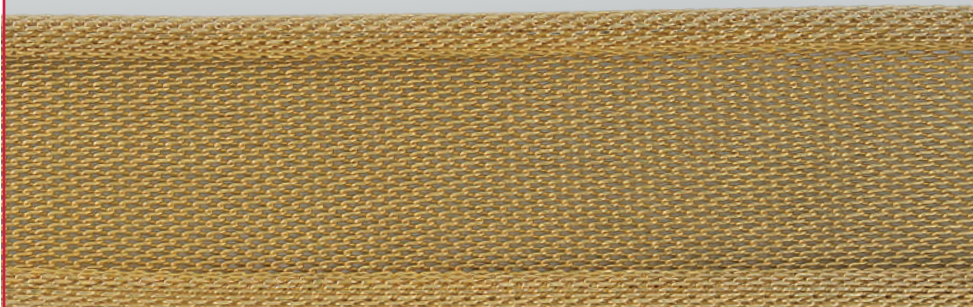
c/bordi
mm 30 filo 0.45

F 130
O 380



c/bordi
mm 35 filo 0.45

F 161



c/bordi
mm 40 filo 0.45

TESSUTO MILANESE

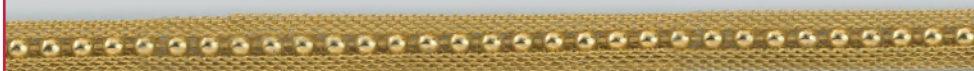
F = Ferro **A** = Alluminio **O** = Ottone ***** = Saldata
F = Iron **A** = Aluminium **O** = Brass ***** = Welded

O 370



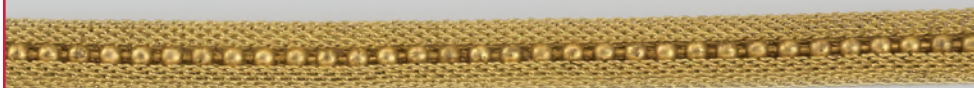
c/pallina
ø 2.5 mm

O 369



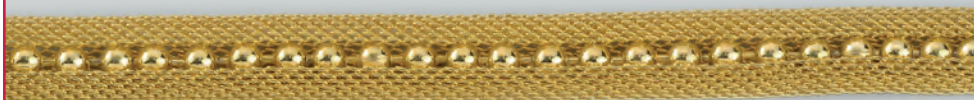
c/pallina
ø 3.20 mm

O 653



c/pallina
ø 3.20 mm

O 654



c/pallina
ø 4.50 mm

O 710



c/strass

O 711



c/strass

O 712



c/strass

TESSUTO MILANESE

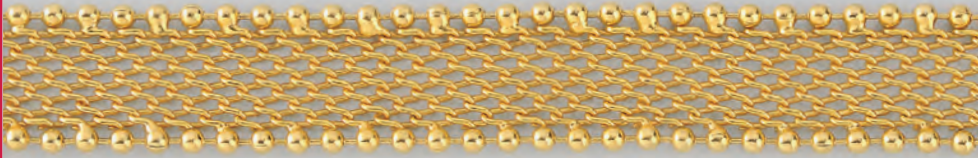
F = Ferro A = Alluminio O = Ottone * = Saldata
F = Iron A = Aluminium O = Brass * = Welded

O 382



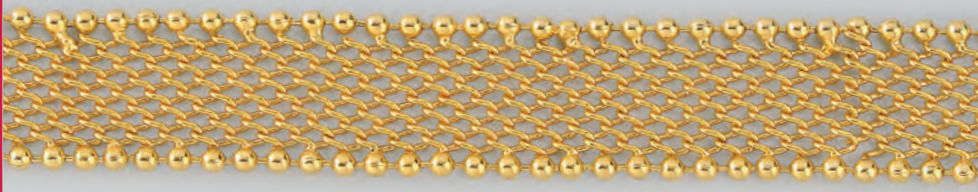
mm 13.50

O 383



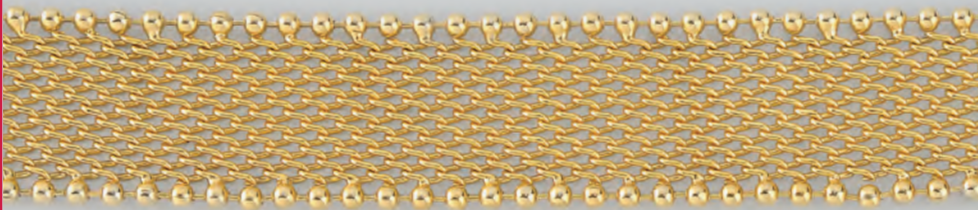
mm 19.50

O 384



mm 22.00

O 387



mm 27.00

O 611



tondo mm 3.00
più porta stross

O 612



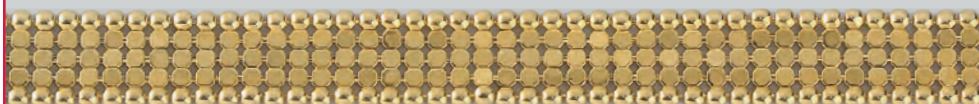
tondo mm 3.00
più borchia

TESSUTO

F = Ferro **A** = Alluminio **O** = Ottone ***** = Saldata

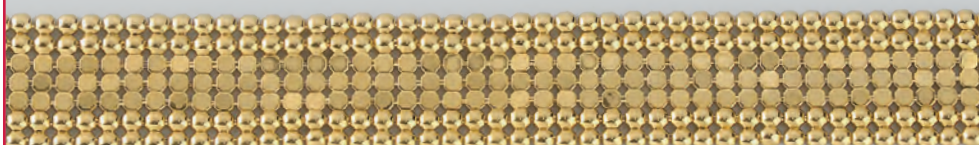
F = Iron **A** = Aluminium **O** = Brass ***** = Welded

O 645



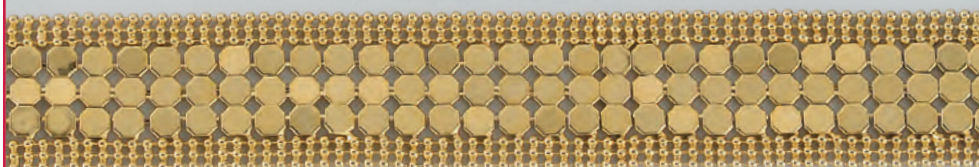
maglia metallica
mm 3 con pallina

O 646



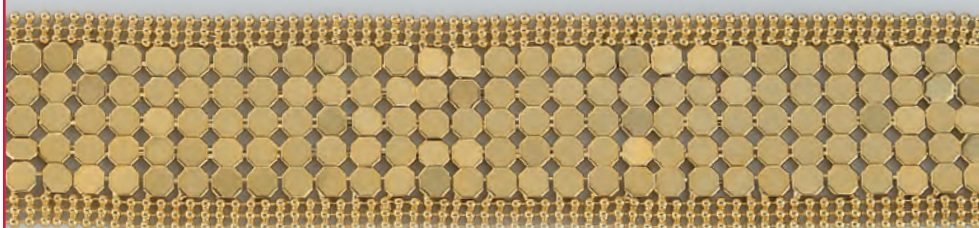
maglia metallica
mm 3 con pallina

O 647



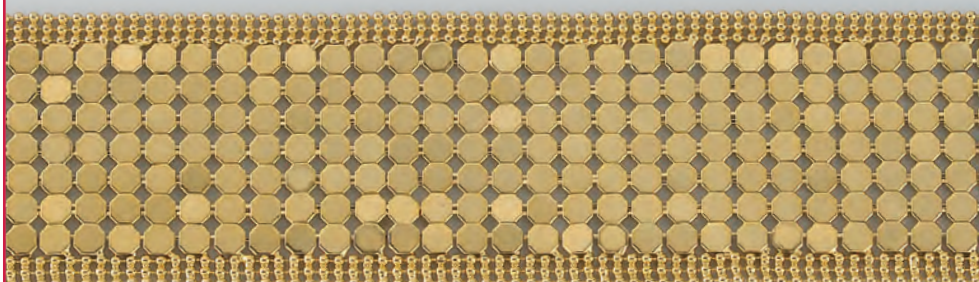
maglia metallica
mm 4 con pallina

O 648



maglia metallica
mm 4 con pallina

O 649



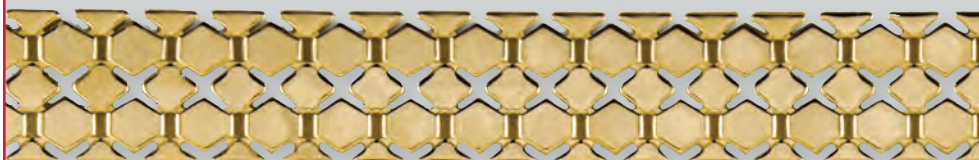
maglia metallica
mm 4 con pallina

O 637



tubolare
maglia metallica

O 979



nido d'ape

O 739



nido d'ape

TESSUTO

F = Ferro A = Alluminio O = Ottone * = Saldata
F = Iron A = Aluminium O = Brass * = Welded

F 144



"8"
singolo

F 145



"8"
singolo

F 143



"8"
doppio

F 58



"8"
singolo

A 308



"8"
singolo

F 278
O 771



Tranciato
"8" singolo

TESSUTO

F = Ferro **A** = Alluminio **O** = Ottone ***** = Saldata

F = Iron **A** = Aluminium **O** = Brass ***** = Welded

O 0797



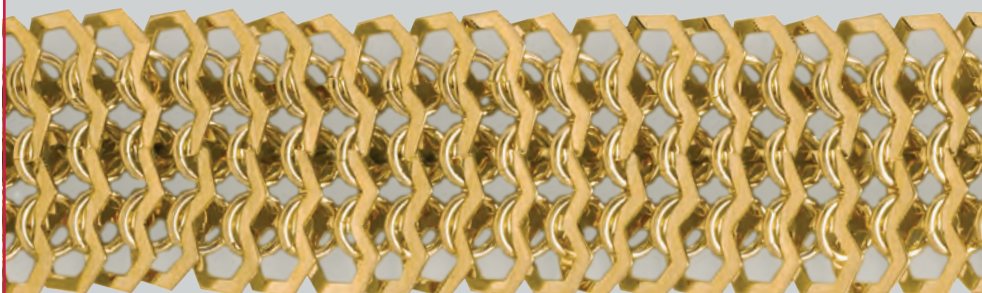
Tranciato
"8" singolo

O 786



Tranciato
"8" singolo

O 795



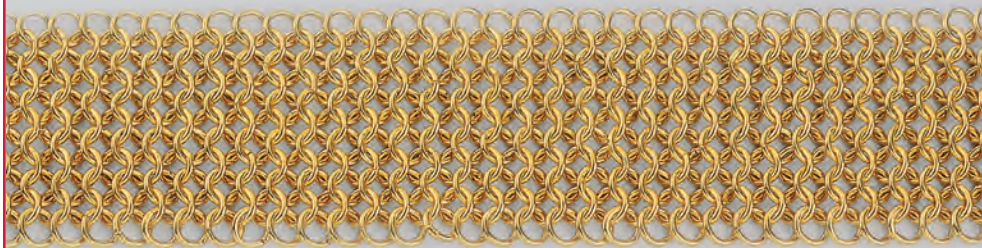
Tranciato
"8" singolo

F 229



7 file anelli

F 230



11 file anelli

F 231



tubolare anelli

F 232



tubolare anelli